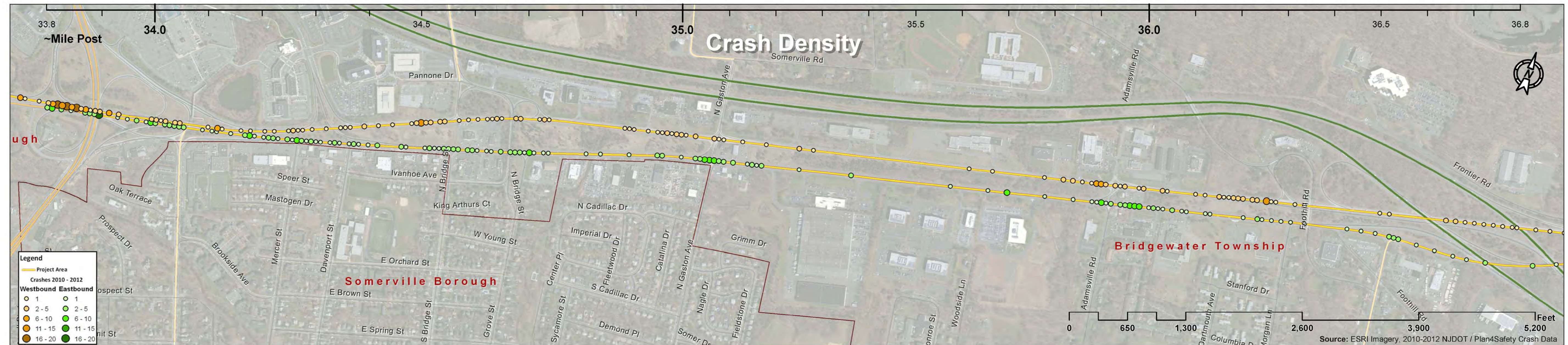
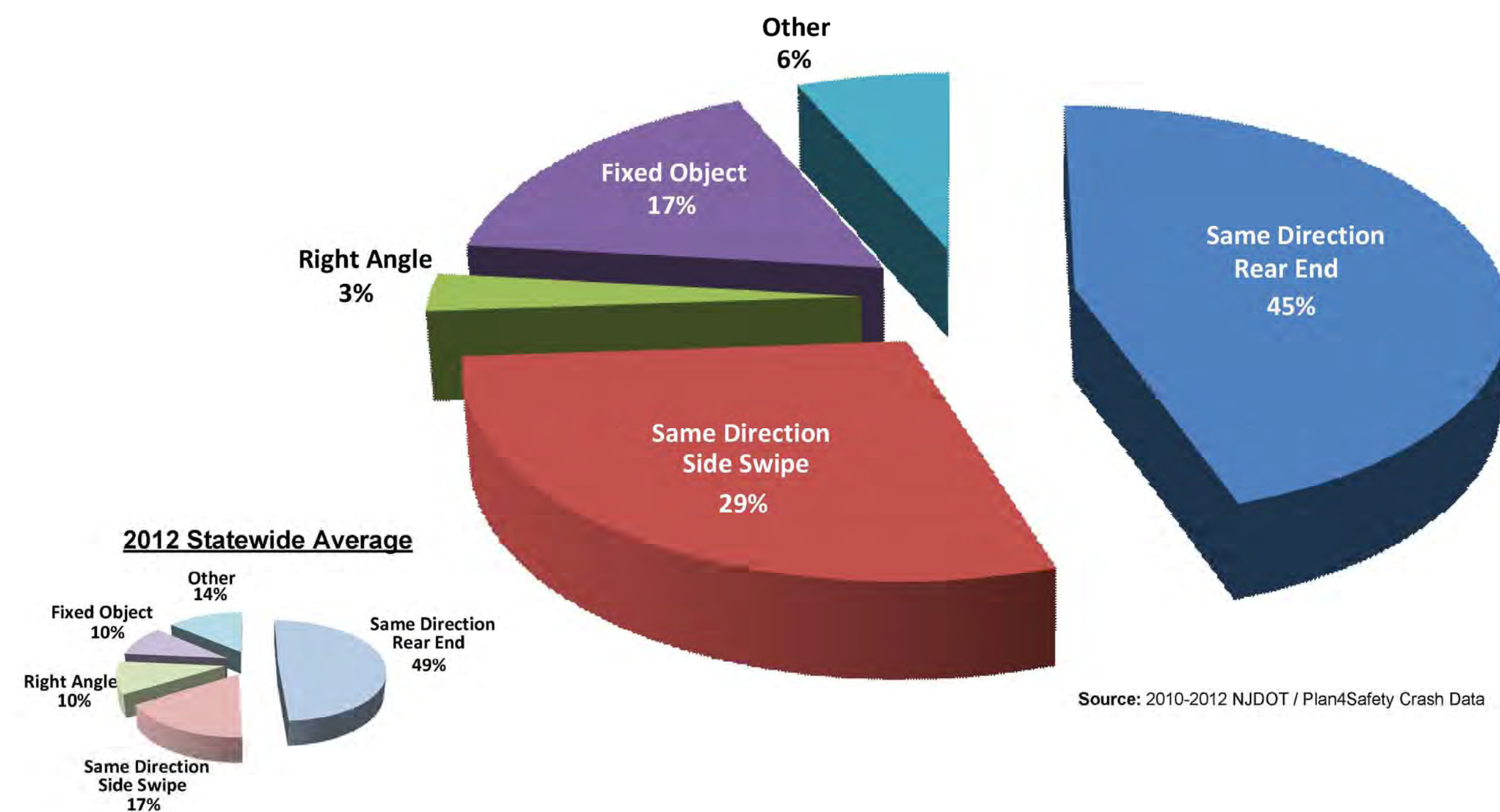


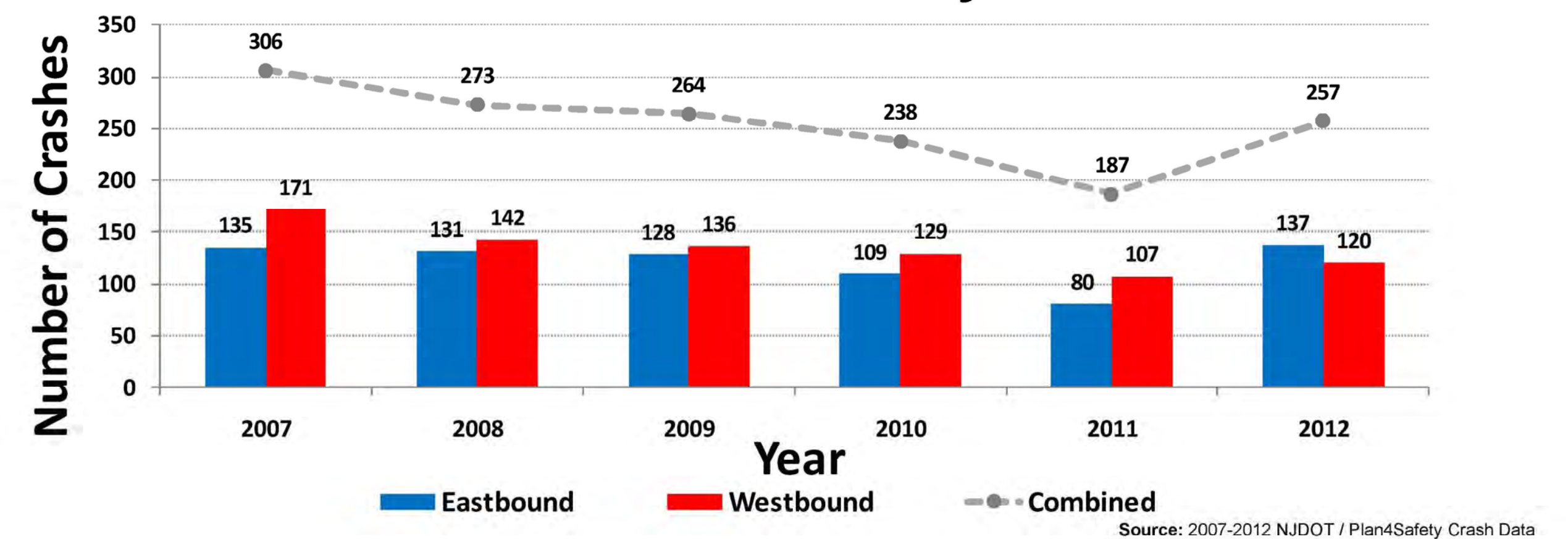
Route 22 CrashBoard Statistic



Crashes by Type



Number of Crashes by Year



Crash Rates by Section

Mileposts	33.76-34.24	34.24-35.40	35.40-36.94
Cross Section	4 or More Lanes, Barrier Median, With Shoulder	4 or More Lanes, Grass Median, With Shoulder	4 or More Lanes, Barrier Median, With Shoulder
2007 - 2009 Crash Rate (per mvm)	6.25	3.02	1.67
2010 - 2012 Crash Rate (per mvm)	7.16	3.05	1.53
2012 Statewide Avg (per mvm)	1.65	2.14	1.65
% of Statewide Avg	434%	142%	93%
2010 -2012 Safety Score (1 = best, 10 = worst)	10	5	4

Source: 2007-2012 NJDOT / Plan4Safety Crash Data



Route 22 Sustainable Corridor
Long Term Improvements

